



American Institute of Pharmaceutical Technology

Start Dates: July & September 2006

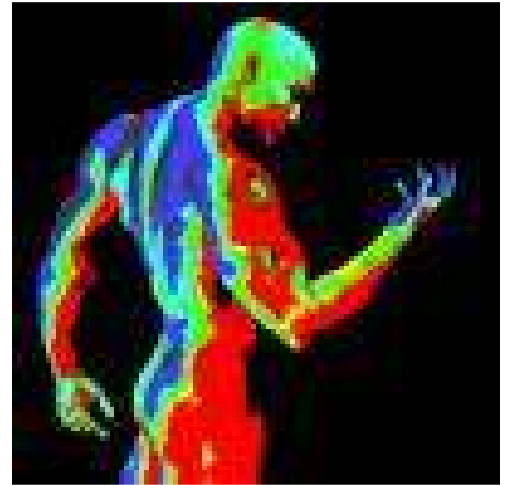
CLINICAL RESEARCH ASSOCIATE PROGRAM

Summary:

This program focuses on learning the concepts, skills and techniques required for work in the clinical research field in the pharmaceutical, medical device and biotechnology industries or Contract Research Organizations. Clinical Research program provides graduates with the specialized knowledge and skills required to design, monitor and manage clinical trials.

Course Outline

- PT601 Introduction to Clinical Research
- PT602 Drug Development & Compliance Regulations
- PT603 Regulations and Good Clinical Practice (GCP)
- PT604 Initiating, monitoring and closing the study
- PT605 Clinical Trial Development
- PT606 Clinical Trial Management
- PT607 Monitoring Obligations and Methods



Career Opportunities:

Pharmaceutical, biologics and medical devices an industry has helped to create opportunities in clinical research. Demands technological and scientific advancements. The North American industry seeks employees with professional knowledge or experience. This program, in addition to your science degree, will make you competitive in the market. Graduates of this program are employed in both the hospital sector and research industries, and can advance to management roles. CRAs work in a broad range of research settings, including:

- Academic health centers
- Government agencies and departments
- Contract research organizations
- Private companies, such as pharmaceutical, biotechnology, and medical device firms

Prerequisite:

Minimum B. Pharma, B.SC, MBBS, Ph. D, MD, RN

Duration & Fee Schedule:

12 Months * \$13,100 Full Time Campus Based

